

# Saga Palvelutalo Salpalinna

Kyösti Kallion katu 3, 15110 Lahti

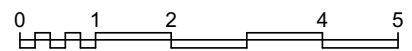
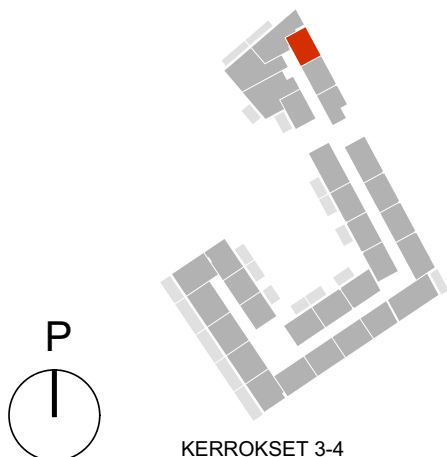
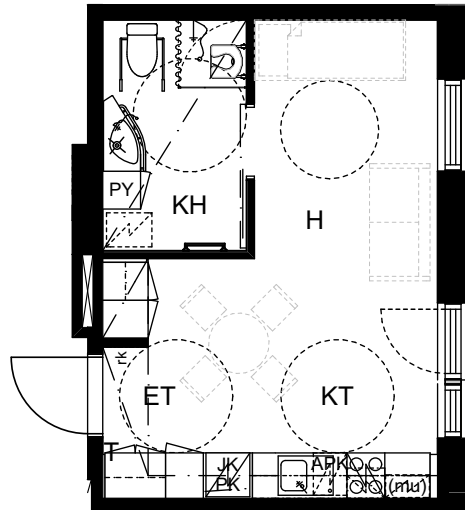
1H+KT, 28,0m<sup>2</sup>

D105, 1.KRS

D205, 2.KRS

D305, 3.KRS

D405, 4.KRS



MITTAKAAVA 1:100

HUONEISTOPOHJA

05.12.2018



ARKKITEHTIPALVELU .fi